

# FLOOR SLABS

SOLID FLOOR SLABS

FILIGREE FLOOR SLABS

PRESTRESSED FLOOR SLABS

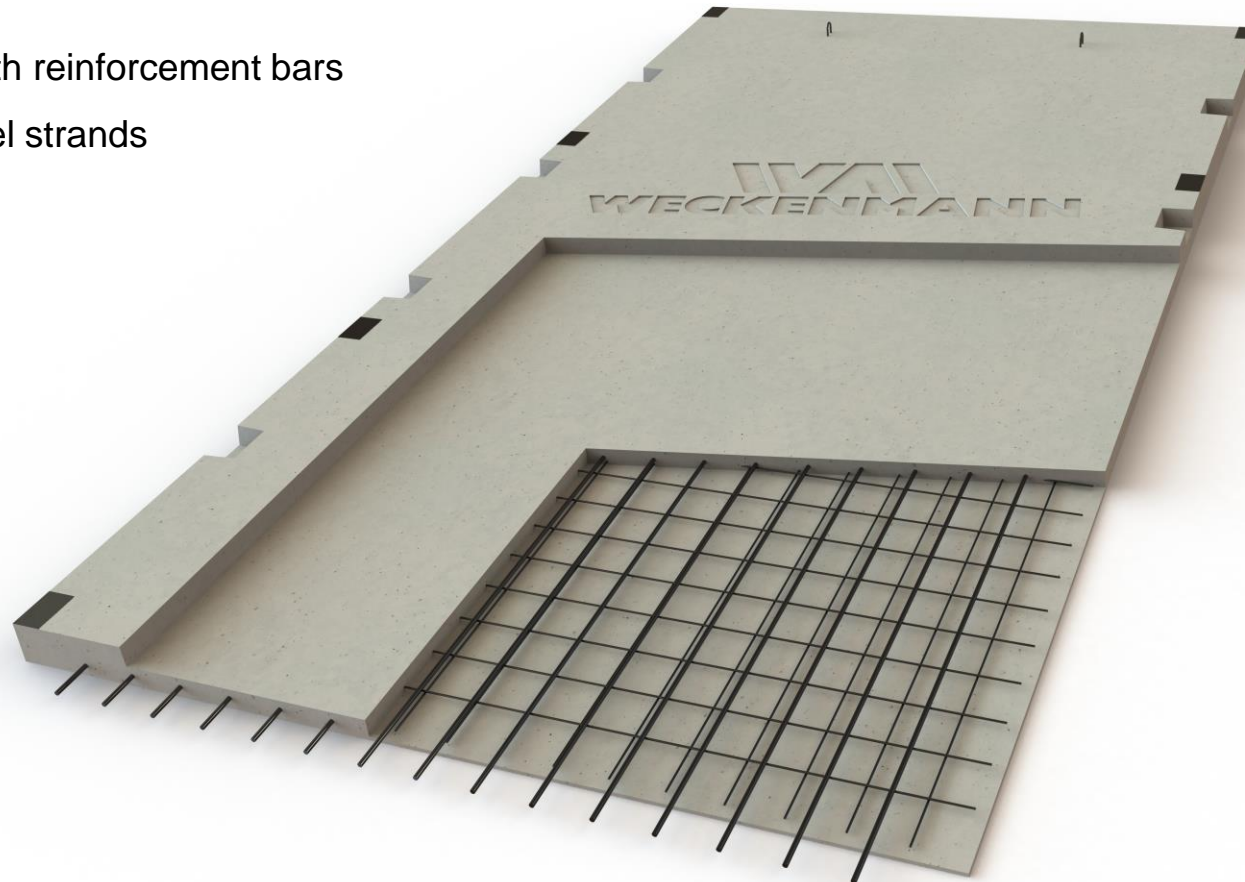
PRESTRESSED FLOOR SLABS WITH INSULATION



## PRESTRESSED FLOOR SLABS

DIFFERENT WAY OF PRODUCTION

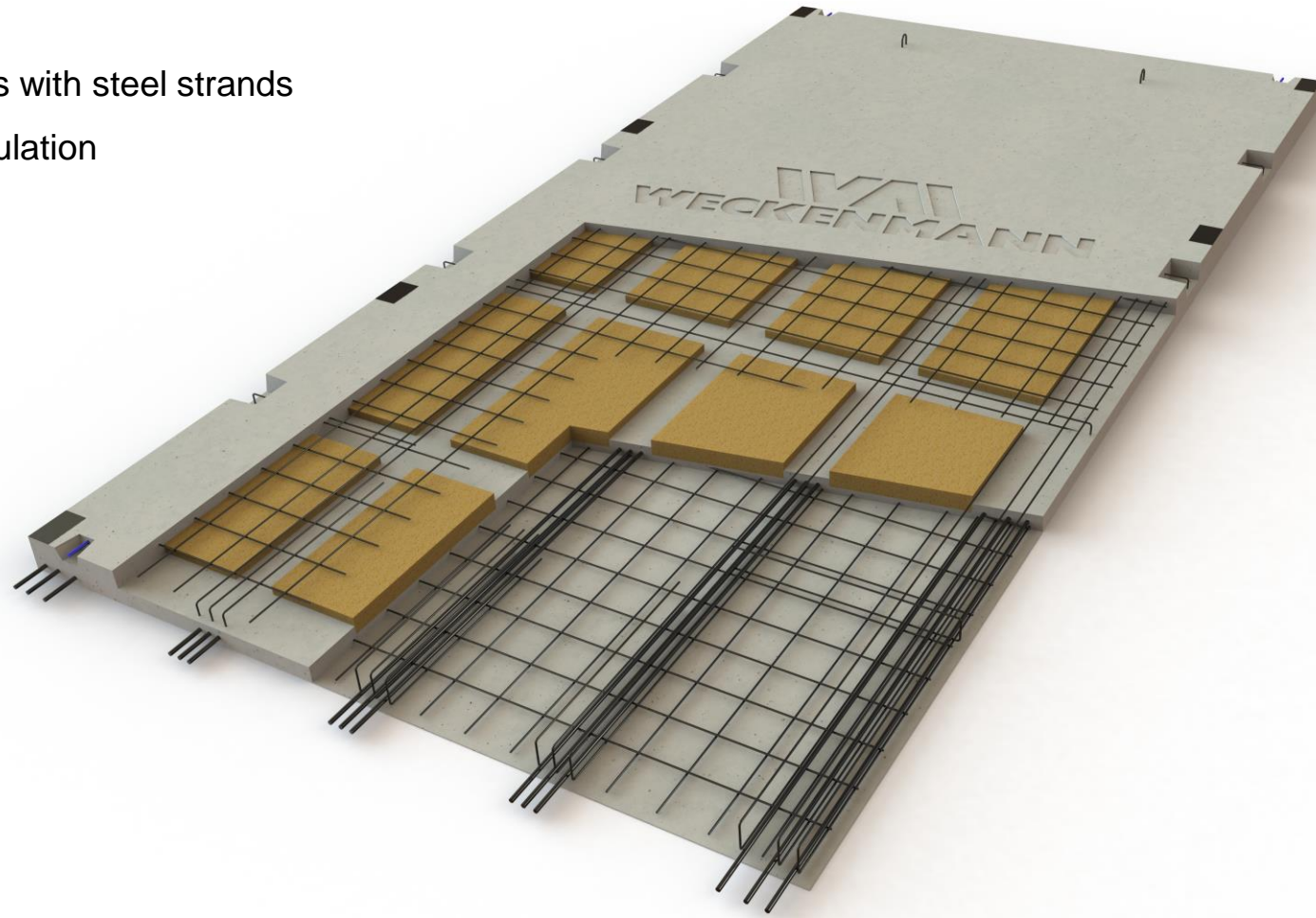
- Prestressed slabs with reinforcement bars
- Prestressed with steel strands



## PRESTRESSED FLOOR SLABS WITH INSUALTION

DIFFERENT WAY OF PRODUCTION

- Prestressed slabs with steel strands
- Sections with insulation



## ADVANTAGES OF PRESTRESSED SLABS BY WECKENMANN

Wide prestressed floor slabs (solid or with insulation) are very common used in precast concrete structures. Especially in seismic areas where the use of hollow core slabs is limited, prestressed floors from Weckenmann can be used without restrictions in seismic ZONES up to 9 points.

- **Easy to manufacture**; can be produced on long beds or in circulation line by using tension frames.
- **Flexibility in a width up to 4 m** reduces the number of ceiling joints, quantity of floor elements and crane lifting work.
- **Thickness is flexible**. The total thickness may vary depending on the load. With a slab thickness of 160 mm, a standard sound-insulation level complies with regulations, an additional sand-cement top screed on the floor is not required, and these all extremely reduces costs, time and the height of a buildings.
- **In Weckenmann slabs you have unlimited possibilities** for arranging any technological openings, as well as exposed reinforcement bars/wires by all four sides or flexibility for embedded and other supporting parts.
- **Weckenmann slabs are maximally adapted for seismic areas**. Approved for usage without any restrictions.
- **Possible to produce special Weckenmann slabs with additional areas with increased thickness** in different places to support heavy elements.
- **Communication and electricity wiring in Weckenmann slabs during production** (IT cables, electrical wiring, heating system).

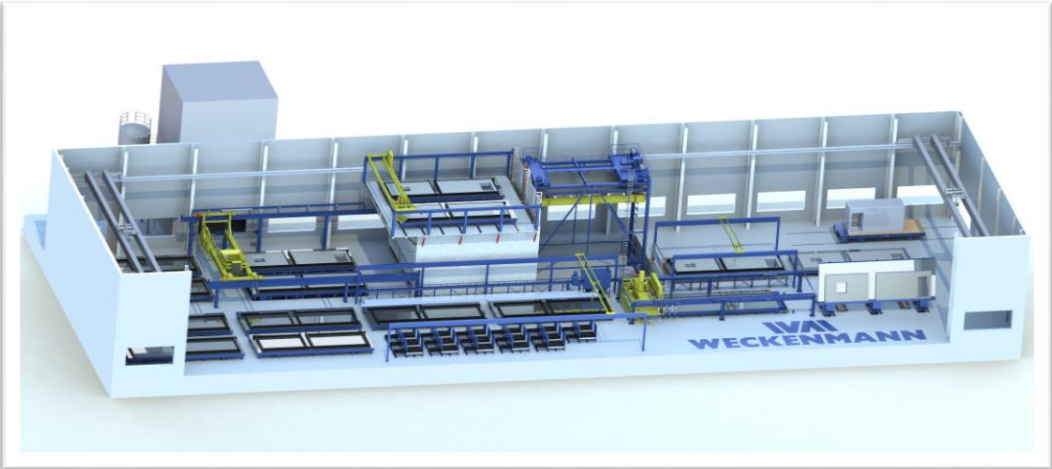
- **Weckenmann slabs are more isotropic** (stiffness is equal in both directions).
- **Production of Weckenmann slabs with insulation inside** (ground slabs, underground, attic, upper storey), which allows to increase thermal performance, reduce weight and save on concrete volume, construction time, improve sound insulation.
- **It is possible to make different console outlets** for balconies in Weckenmann slabs.
- **Cutouts in slabs can be arranged both in the factory** and directly at the construction site.
- **The bearing wall by using Weckenmann floor slabs has a less thickness**, due to the smaller depth of support (thus leads to increases of the selling area, reduces the cost of concrete in the manufacture).
- **A bearing/support of the Weckenmann slabs by two sides (by three sides for a seismic zones) is easy possible for a flexible floor planning.**
- **Easy and high speed installation of Weckenmann slabs.**
- **Structural floor elements like Weckenmann slabs are produced in precast plants**, where all processes are mechanized and automated, which minimizes defects or errors.
- **The large width and span of the Weckenmann slabs avoiding seams** not in the area of wall partitions and increasing the construction time.



FLOOR SLABS

# SOLID FLOOR SLABS AND FILIGREE

DIFFERENT WAY OF PRODUCTION



Pallet Circulation System



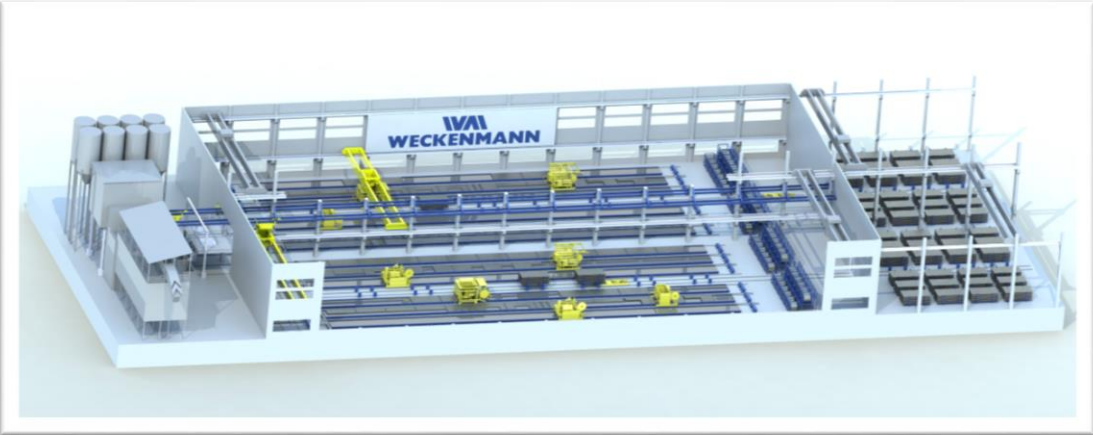
Stationary Casting Bed



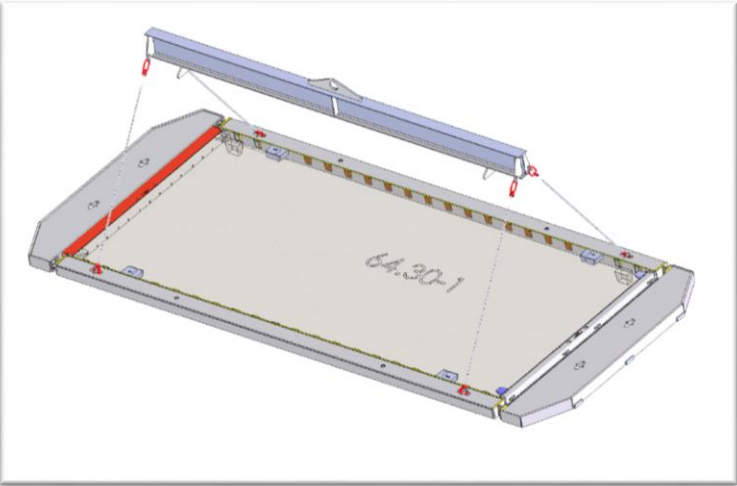
Tilting Table

# PRESTRESSED FLOOR SLABS AND SLABS WITH INSULATION

## DIFFERENT WAY OF PRODUCTION



Stationary Casting Bed



Prestressing Frame

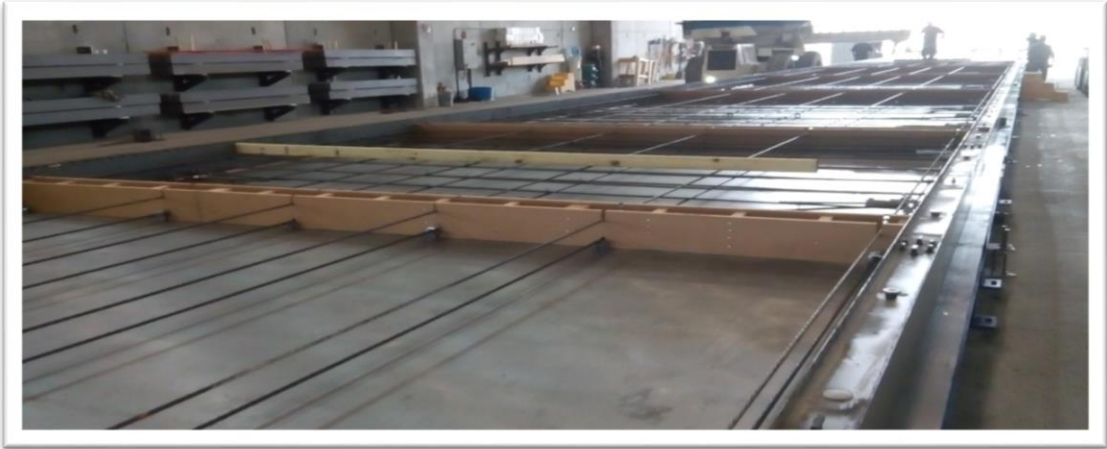


Pallet Circulation System with Prestressing Frame



# PRESTRESSED FLOOR SLABS

## DIFFERENT WAY OF PRODUCTION



Prestressed with reinforcement bars

Prestressed with steel strands



## PRESTRESSED FLOOR SLABS WITH INSULATION

DIFFERENT WAY OF INSTALLATION



**Weckenmann Anlagentechnik GmbH & Co. KG**  
**Birkenstraße 1**  
**72358 Dormettingen**  
**GERMANY**

[www.weckenmann.com](http://www.weckenmann.com)  
e-mail: [info@weckenmann.com](mailto:info@weckenmann.com)  
Tel.: +49 7427 9493-0  
Fax: +49 7427 9493-29